

UNIT, DIRECT SUPPORT, AND GENERAL SUPPORT MAINTENANCE  
REPAIR PARTS AND SPECIAL TOOLS LIST  
TRUCK, 5-TON, 6X6, M809 SERIES TRUCKS (DIESEL)

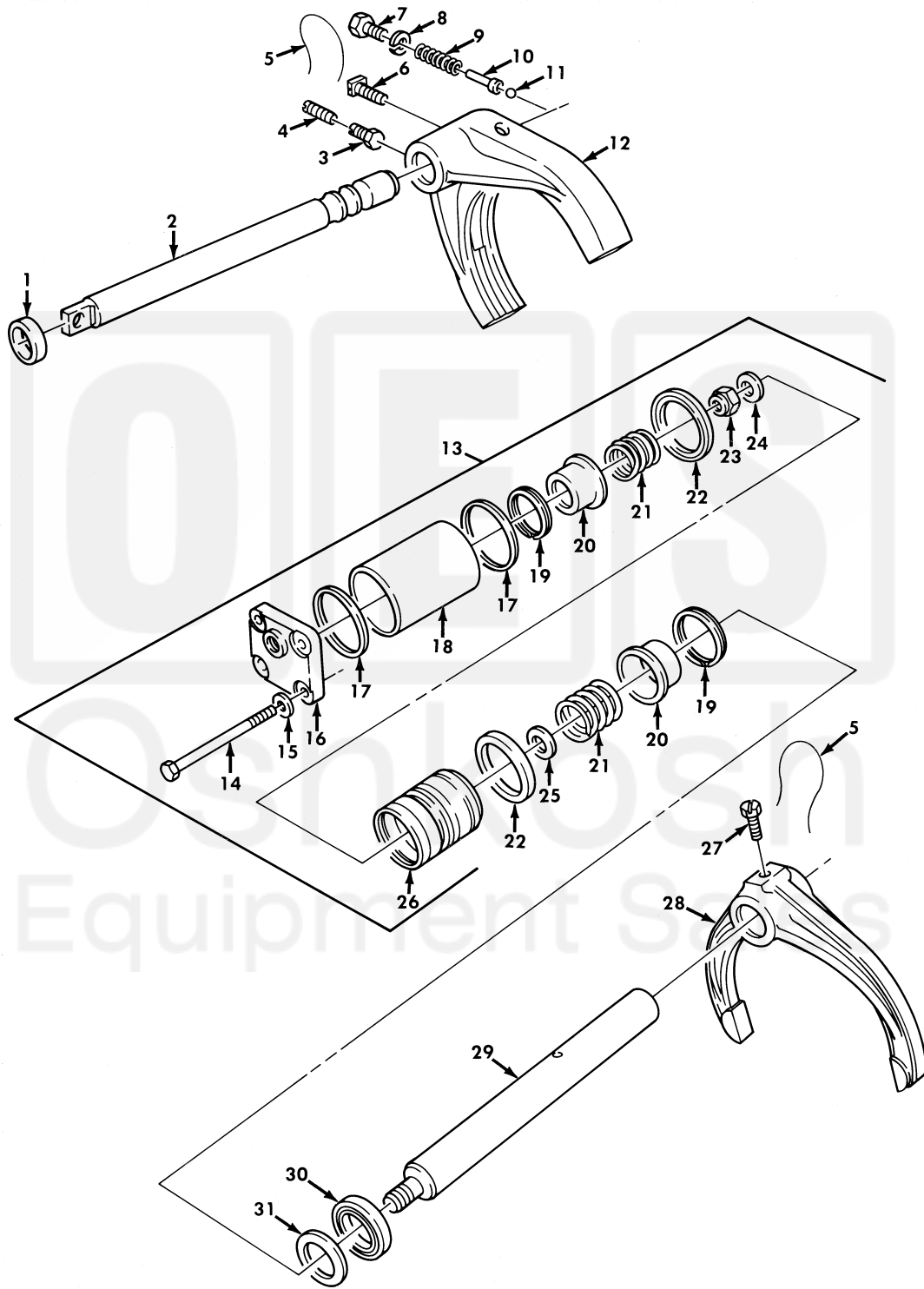


Figure 146. Transfer Shift Mechanisms.

| (1)<br>ITEM<br>NO                                    | (2)<br>SMR<br>CODE | (3)<br>NSN       | (4)<br>CAGEC | (5)<br>PART<br>NUMBER | (6)<br>DESCRIPTION AND USABLE ON CODE (UOC)                                    | (7)<br>QTY |
|------------------------------------------------------|--------------------|------------------|--------------|-----------------------|--------------------------------------------------------------------------------|------------|
| GROUP 0803 GEAR SHIFT,VACUUM BOOSTER<br>AND CONTROLS |                    |                  |              |                       |                                                                                |            |
| FIG. 146 TRANSFER SHIFT MECHANISMS                   |                    |                  |              |                       |                                                                                |            |
| 1                                                    | PAHZZ              | 5330-00-571-7052 | 19207        | 10938287              | SEAL,PLAIN ENCASED.....                                                        | 1          |
| 2                                                    | PAHZZ              | 3040-00-591-5827 | 19207        | 7998650               | SHAFT, SHOULDERED.....                                                         | 1          |
| 3                                                    | PAHZZ              | 5306-00-470-2110 | 19207        | 7375283               | BOLT,MACHINE.....                                                              | 1          |
| 4                                                    | PAHZZ              | 5305-00-725-0164 | 96906        | MS51963-139           | SETSCREW.....                                                                  | 1          |
| 5                                                    | MHHZZ              |                  | 96906        | MS20995F47-AR         | WIRE,NONELECTRICAL MAKE FROM<br>WIRE,P/N MS20995F47,LENGTH AS<br>REQUIRED..... | 1          |
| 6                                                    | PAHZZ              | 5305-00-695-7174 | 19207        | 7521390               | SETSCREW.....                                                                  | 1          |
| 7                                                    | PAHZZ              | 5306-00-734-6774 | 19207        | 7346774               | BOLT,MACHINE.....                                                              | 1          |
| 8                                                    | PAHZZ              | 5310-00-194-1483 | 96906        | MS35333-44            | WASHER, LOCK.....                                                              | 1          |
| 9                                                    | PAHZZ              | 5360-00-692-6089 | 19207        | 7521387               | SPRING,HELICAL,COMP.....                                                       | 1          |
| 10                                                   | PAHZZ              | 2520-00-514-3782 | 19207        | 5143782               | PLUNGER,SHIFTER SHA.....                                                       | 1          |
| 11                                                   | PAHZZ              | 3110-00-948-9796 | 96906        | MS19061-20013         | BALL,BEARING.....                                                              | 1          |
| 12                                                   | PAHZZ              | 2520-00-953-9908 | 19207        | 7748586               | SHIFTER FORK,VEHICU.....                                                       | 1          |
| 13                                                   | PAFFH              | 3040-00-734-6756 | 19207        | 7346756               | CYLINDER ASY TRANSF.....                                                       | 1          |
| 14                                                   | PAFZZ              | 5305-00-071-2517 | 80204        | B1821BH025C350N       | .SCREW,CAP,HEXAGON H.....                                                      | 4          |
| 15                                                   | PAFZZ              | 5310-00-145-2085 | 19207        | 8327009               | .WASHER,KEY.....                                                               | 4          |
| 16                                                   | PAFZZ              | 5340-00-176-8384 | 19207        | 8758298               | .COVER,ACCESS.....                                                             | 1          |
| 17                                                   | PAFZZ              | 5365-00-832-7774 | 19207        | 10913209              | .SPACER,RING.....                                                              | 2          |
| 18                                                   | XAFZZ              |                  | 19207        | 8758292               | .CYLINDER.....                                                                 | 1          |
| 19                                                   | PAFZZ              | 5325-00-663-1249 | 80756        | RR175C                | .RING,RETAINING.....                                                           | 2          |
| 20                                                   | XAFZZ              |                  | 19207        | 8758291               | .RETAINER.....                                                                 | 2          |
| 21                                                   | PAFZZ              | 5360-01-167-4502 | 19207        | 8758293               | .SPRING,HELICAL,COMP.....                                                      | 2          |
| 22                                                   | PAFZZ              | 5330-00-832-8235 | 19207        | 8758294               | .SEAL,TRANSFER ENGAG.....                                                      | 2          |
| 23                                                   | PAFZZ              | 5310-00-088-0552 | 96906        | MS21044N7             | .NUT,SELF-LOCKING,HE.....                                                      | 1          |
| 24                                                   | XAFZZ              |                  | 19207        | 11621033              | .WASHER.....                                                                   | 1          |
| 25                                                   | PAFZZ              | 5310-00-527-4222 | 19207        | 8758299               | .WASHER,FLAT.....                                                              | 1          |
| 26                                                   | XAFZZ              |                  | 19207        | 8758295               | .PISTON.....                                                                   | 1          |
| 27                                                   | PAHZZ              | 5305-00-752-1391 | 19207        | 7521391               | SETSCREW.....                                                                  | 1          |
| 28                                                   | PAHZZ              | 2520-00-737-5289 | 19207        | 7375289               | SHIFTER FORK,VEHICU.....                                                       | 1          |
| 29                                                   | PAHZZ              | 3040-00-734-6803 | 19207        | 7346803               | SHAFT.....                                                                     | 1          |
| 30                                                   | PAFZZ              | 5330-00-737-5282 | 19207        | 7375282               | PACKING,PREFORMED.....                                                         | 1          |
| 31                                                   | PAFZZ              | 5310-00-188-4195 | 76894        | 1263                  | WASHER,FLAT.....                                                               | 1          |

END OF FIGURE